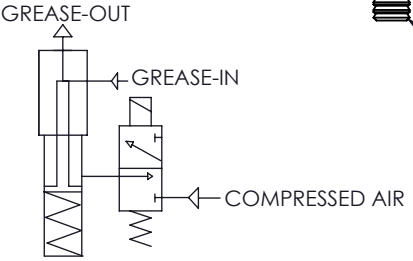


2X 10-32 X 1-1/4 LG, SHCS
(INCLUDED)



NOTE: 3-WAY VALVE SUPPLIED BY CUSTOMER

DV1003-0:
 Dispense Valve with mounting manifold. Valve is air to open, spring to close. Manifold has 10-32 air inlet port with inline quick exhaust valve for 1/4" diameter air line, and 1/8" NPT material inlet port. Material output threads are 3/8-24 male and adapters are available from GP Reeves. Working hydraulic pressure is 1500 PSI max. Operating temp is 450 deg. F. max. Air operating pressure is 60 PSI minimum.

SALES DRAWING			GP REEVES INC HOLLAND, MI USA
UNLESS SPECIFIED: DIMENSIONS IN INCHES			DESCRIPTION: DISPENSE VALVE, 1/8" NPT, 1,500 PSI MAX, MALE 3/8-24 OUTLET
PROPRIETARY AND CONFIDENTIAL THE INFORMATION CONTAINED IN THIS DRAWING IS THE SOLE PROPERTY OF G.P. REEVES INC. ANY REPRODUCTION IN PART OR AS A WHOLE WITHOUT THE WRITTEN PERMISSION OF G.P. REEVES INC. IS PROHIBITED.		DRAWING NO. DV1003-0	SHEET 1 OF 3 REV A
MODELED	BY BMA	DATE 11-18-15	WEIGHT: 0.620 lb
DETAILED	BY BMA	DATE 11-18-15	SIZE A SCALE: 1:2