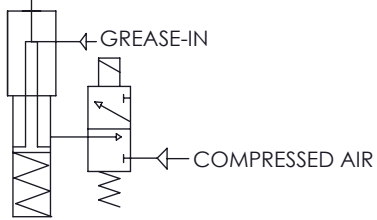
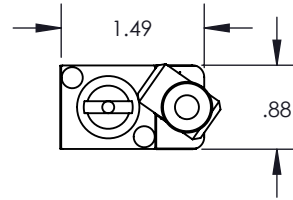


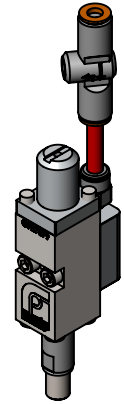
GREASE-OUT



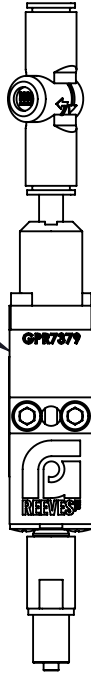
NOTE: 3-WAY VALVE SUPPLIED BY CUSTOMER



3D Model Available

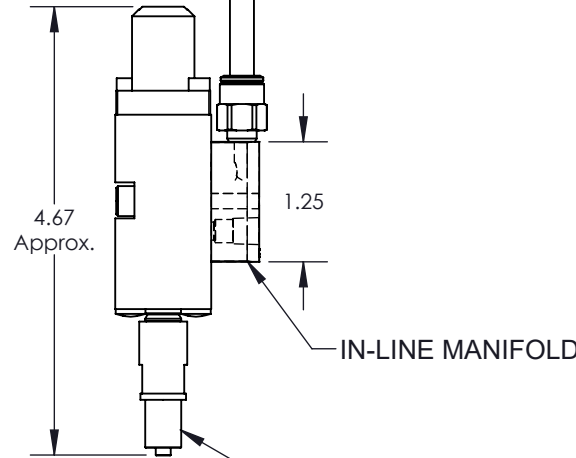


VALVE
(GPR7379)

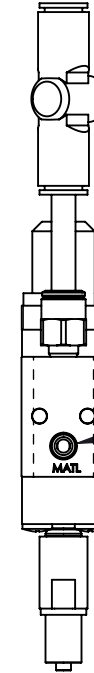


1/4" TUBE AIR INLET
PUSH-LOCK

QUICK EXHAUST VALVE



1/16 NPT
MATERIAL INLET



I = inline mounting

DV1003I-LR:

Dispense Valve with inline style feed block. Valve is air to open, spring to close. Valve has air inlet port for 1/4" tubing, 1/16 NPT female material inlet, and Luer Lock nozzle adaptor.

SALES DRAWING

UNLESS SPECIFIED:
DIMENSIONS IN INCHES

PROPRIETARY AND CONFIDENTIAL
THE INFORMATION CONTAINED IN THIS
DRAWING IS THE SOLE PROPERTY OF G.P.
REEVES INC. ANY REPRODUCTION IN PART
OR AS A WHOLE WITHOUT THE WRITTEN
PERMISSION OF G.P. REEVES INC. IS
PROHIBITED.

MODELED	BY	DATE
ACL	ACL	10/2/19
DETAILED	BY	DATE
ACL	ACL	10/2/19



GP REEVES INC
HOLLAND, MI USA

DESCRIPTION:
**INLINE DISPENSE VALVE, 1/16"
NPT, 1,500 PSI MAX, LUER LOCK
OUTLET**

DRAWING NO. SHEET 1 OF 2 REV
DV1003I-LR **A**

WEIGHT: 0.48 lb SIZE A SCALE: 1:2

Last updated: 6/2/2023