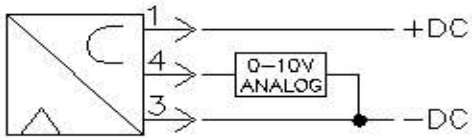
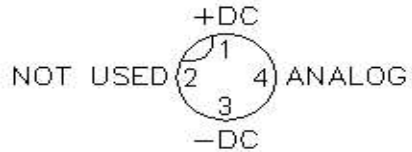


Electrical



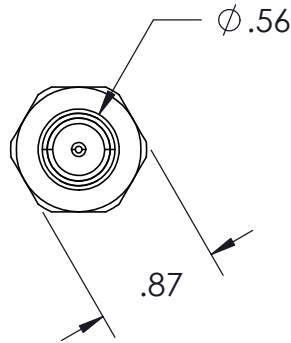
View of male pin connector



CABLE OPTIONS
Both are DC Micro style (four-pin type) with 5 meter long PVC cord
#1850 cord has a straight connector
#1851 cord has a 90 degree connector



#4 SAE pressure inlet (to use with 1/8 NPT female port, use #3993 adaptor)



3D Model Available



EPS1001 ELECTRONIC PRESSURE SENSOR SPECIFICATIONS

- Pressure Range** 0 – 870 p.s.i.
- Power Supply** 15 – 30 DC V
- Over Pressure Safety** 1,740 p.s.i.
- Maximum Load** $R_A > 5 \text{ kOhm}$
- Burst Pressure** 7,977 p.s.i.
- Accuracy (% of span)** < 0.5 (BFSL)
- Wetted Parts Material** Stainless Steel
- Material Temperature** -40 – +257° F.
- Case Material** Highly resistive, fiberglass-enforced plastic (PBT)
- Ambient Temperature** -40 – +212° F.
- Signal Output** 0 – 10 V, 3-wire
- Response Time (10 ... 90%)** < 2 ms
- Connector** M12 x 1, 4-pin (Micro style)
- Weight** Approx. 70g

EPS1001:

Designed & engineered for use with grease. Has #4 SAE male pressure inlet. Includes Micro connector for quick electrical connections. Includes a sample program for use with A-B Micrologix PLC.

REFERENCE DOCUMENTATION:
-EPS1001_Sample (PLC Program)

SALES DRAWING					GP REEVES INC HOLLAND, MI USA
UNLESS SPECIFIED: DIMENSIONS IN INCHES			DESCRIPTION: ELECTRONIC PRESSURE SENSOR ANALOG		
PROPRIETARY AND CONFIDENTIAL THE INFORMATION CONTAINED IN THIS DRAWING IS THE SOLE PROPERTY OF G.P. REEVES INC. ANY REPRODUCTION IN PART OR AS A WHOLE WITHOUT THE WRITTEN PERMISSION OF G.P. REEVES INC. IS PROHIBITED.			DRAWING NO. EPS1001		SHEET 1 OF 3 REV C
MODELED	BY ACL	DATE 3/4/14	WEIGHT:	SIZE A	SCALE: 3:4
DETAILED	ACL	3/4/14	Last updated: 6/30/2022		