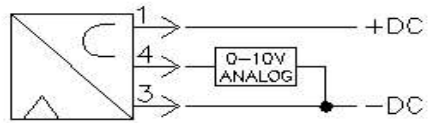
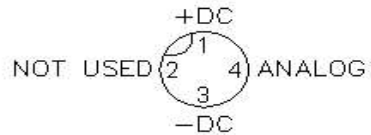


## Electrical

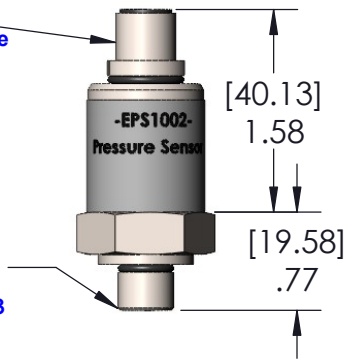


View of male pin connector

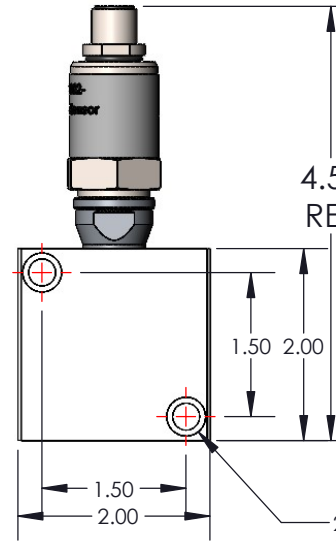
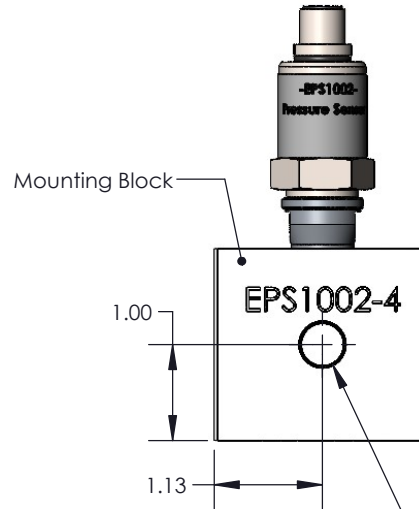
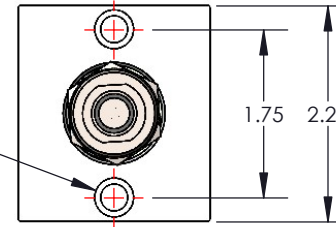


**CABLE OPTIONS**  
Both are DC Micro style (four-pin type) with 5 meter long PVC cord  
#1850 cord has a straight connector  
#1851 cord has a 90 degree connector

#4 SAE pressure inlet (to use with 1/8 NPT female port, use #3993 adaptor)



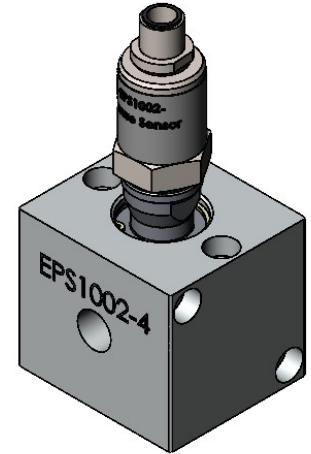
2x C'bore for 1/4" SHCS (mounting holes)



1/4" NPT inlet/outlet (both sides)

4.52 REF

2x C'bore for 1/4" SHCS (mounting holes)



3D Model Available

### EPS1002 ELECTRONIC PRESSURE SENSOR SPECIFICATIONS

**Pressure Range** 0 – 3,000 p.s.i.

**Power Supply** 14 – 36v DC

**Over Pressure Safety** 6,000 p.s.i.

**Maximum Load**  $R_A > 5 \text{ kOhm}$

**Burst Pressure** 7,977 p.s.i.

**Accuracy (% of span)** < 0.4 (BFSL)

**Wetted Parts Material** Stainless Steel

**Material Temperature** -40 – +257° F.

**Ambient Temperature** -40 – +212° F.

**Signal Output** 0 – 10 V, 3-wire

**Response Time (10 ... 90%)** < 2 ms

**Connector** M12 x 1, 4-pin (Micro style)

**Weight** Approx. 70g

#### EPS1002-4:

Electronic Pressure Sensor -(0-3000 p.s.i.), SAE 04 Male Pressure Fitting, Includes mounting block with 1/4" NPT inlet and outlet port, 0 to 10 Volt Output, 4 Pin Micro connector. Includes a sample program for use with A-B Micrologix PLC. This sensor requires an analog input to the user's PLC.

## Sales Drawing

REFERENCE DOCUMENTATION:  
-KA6178 PCL Program

SALES DRAWING			GP REEVES INC HOLLAND, MI USA	
UNLESS SPECIFIED: DIMENSIONS IN INCHES			DESCRIPTION: ELECTRONIC PRESSURE SENSOR	
PROPRIETARY AND CONFIDENTIAL THE INFORMATION CONTAINED IN THIS DRAWING IS THE SOLE PROPERTY OF G.P. REEVES INC. ANY REPRODUCTION IN PART OR AS A WHOLE WITHOUT THE WRITTEN PERMISSION OF G.P. REEVES INC. IS PROHIBITED.			DRAWING NO. SHEET 2 OF 3 EPS1002-4 A	
MODELED	BY	DATE	WEIGHT:	SCALE: 2:3
DETAILED	ACL	7/30/15	SIZE A	

Last updated: 8/9/2022