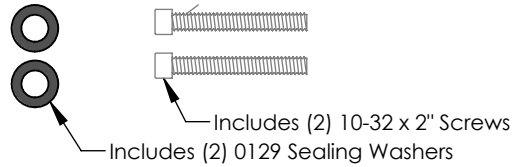
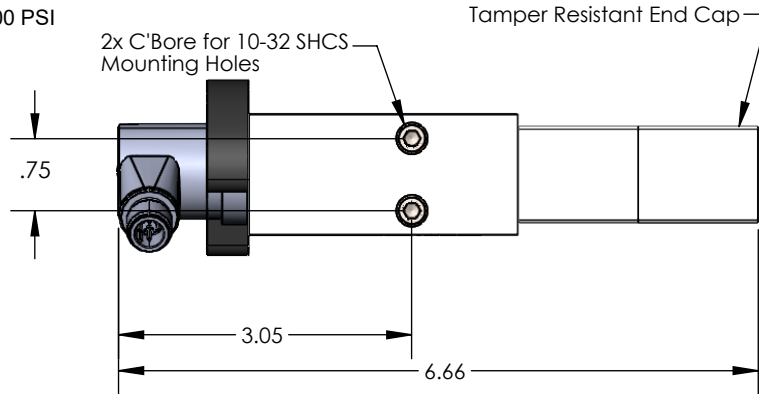


Flow Sensor Specifications

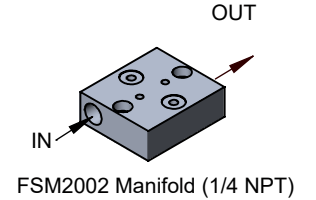
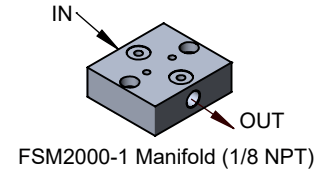
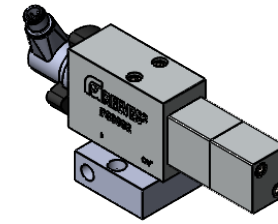
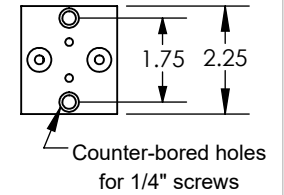
- Minimum shot size: 0.2 cc
- Minimum flow rate: 0.2 cc/second
- Maximum flow rate: 9 cc/second*
- Maximum pressure: 3000 PSI
- Body: Aluminum
- Internals: steel, brass, viton, nylon



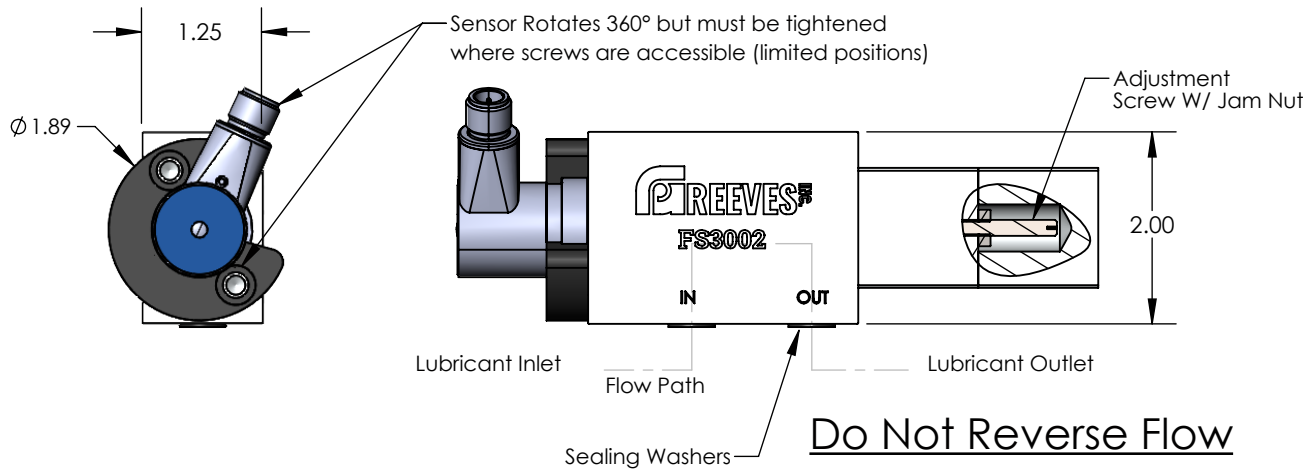
*Tested with NLGI 1.5 grease at 1000 PSI on FSM2002 manifold



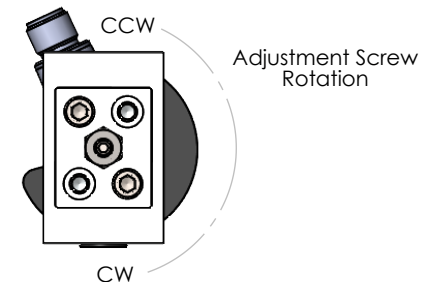
Manifold Mounting Dimensions



Manifolds available separately, contact GP Reeves for options



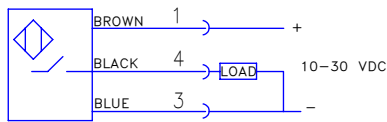
Adjustment:
Rotate adjustment screw Clockwise for higher flow rates and/or more viscous materials. Rotate adjustment screw counterclockwise for lower flow rates and/or less viscous materials.



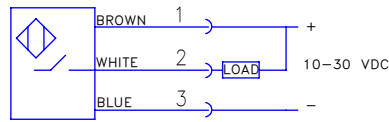
NOTE: Signal is ON when no flow, OFF when flow is detected



WIRING DIAGRAM FOR PNP USE



WIRING DIAGRAM FOR NPN USE



NOTE: If replacing old model FS3002NPN, wiring may need to be changed to use white wire (pin 2)

SALES DRAWING

UNLESS SPECIFIED:
DIMENSIONS IN INCHES

PROPRIETARY AND CONFIDENTIAL
THE INFORMATION CONTAINED IN THIS DRAWING IS THE SOLE PROPERTY OF G.P. REEVES INC. ANY REPRODUCTION IN PART OR AS A WHOLE WITHOUT THE WRITTEN PERMISSION OF G.P. REEVES INC. IS PROHIBITED.

MODELED	BY	DATE
ACL	ACL	12/09/13
DETAILED	ACL	12/09/13



GP REEVES INC
HOLLAND, MI USA

DESCRIPTION:
**FLOW SENSOR, INDUCTIVE,
PNP/NPN CONFIGURABLE**

DRAWING NO. SHEET 1 OF 4
FS3002 REV **C**

WEIGHT: 0.00 lb SIZE A SCALE: 1:2

Last updated: 2/10/2023